

SpaceVision
GROUP
ISO 9001:2008 certified company

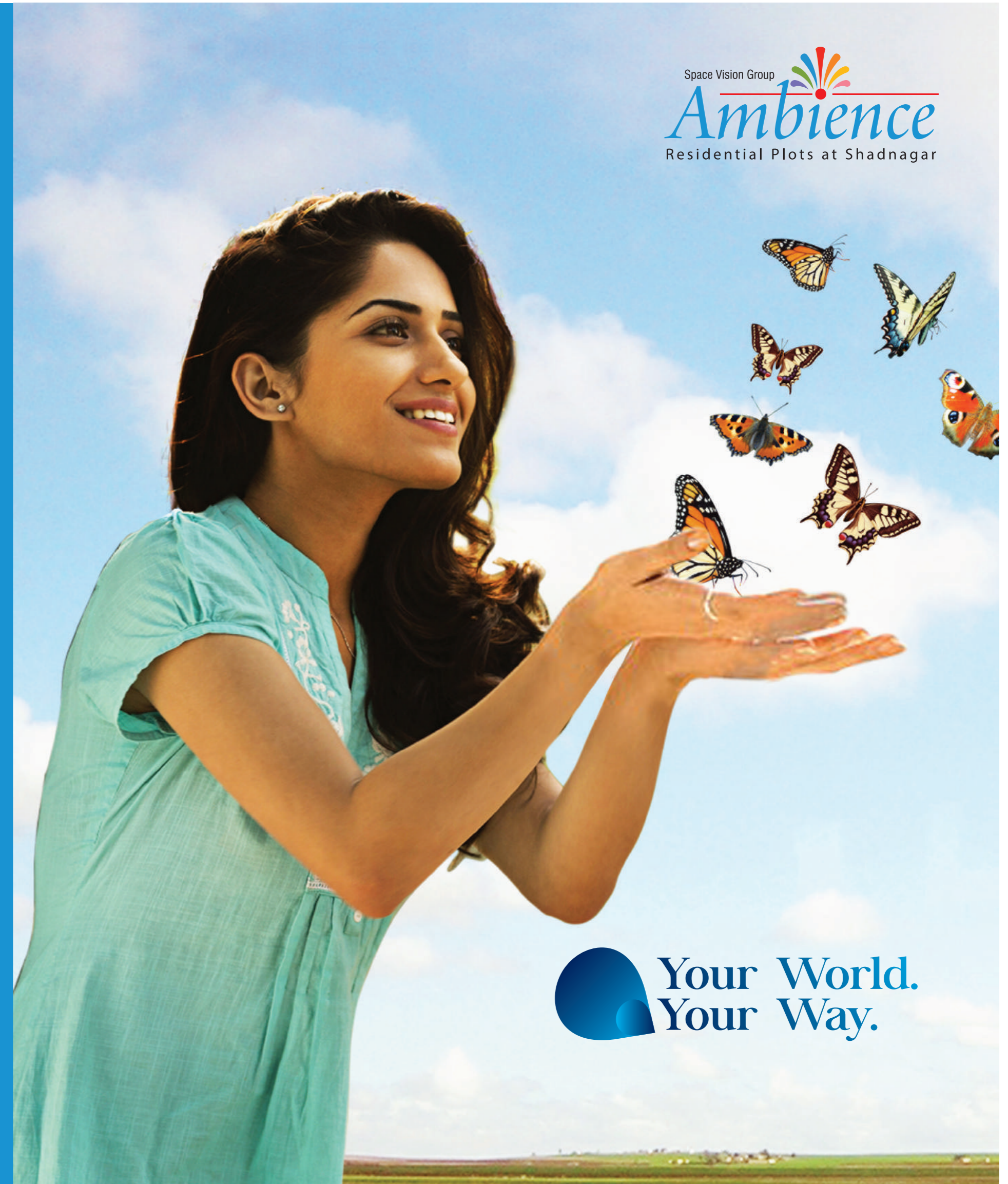
Flat no.703, Tirulmala Shah Apartments,
Yellareddyguda Road, Ameerpet 'X' Roads, Hyderabad- 500 016.

www.spacevisioninfra.com

Concept & Design by chromix.in 046-23708810

Note: Brochure is only conceptual presentation of the venture and not a legal offering.

Space Vision Group
Ambience
Residential Plots at Shadnagar



 **Your World.
Your Way.**

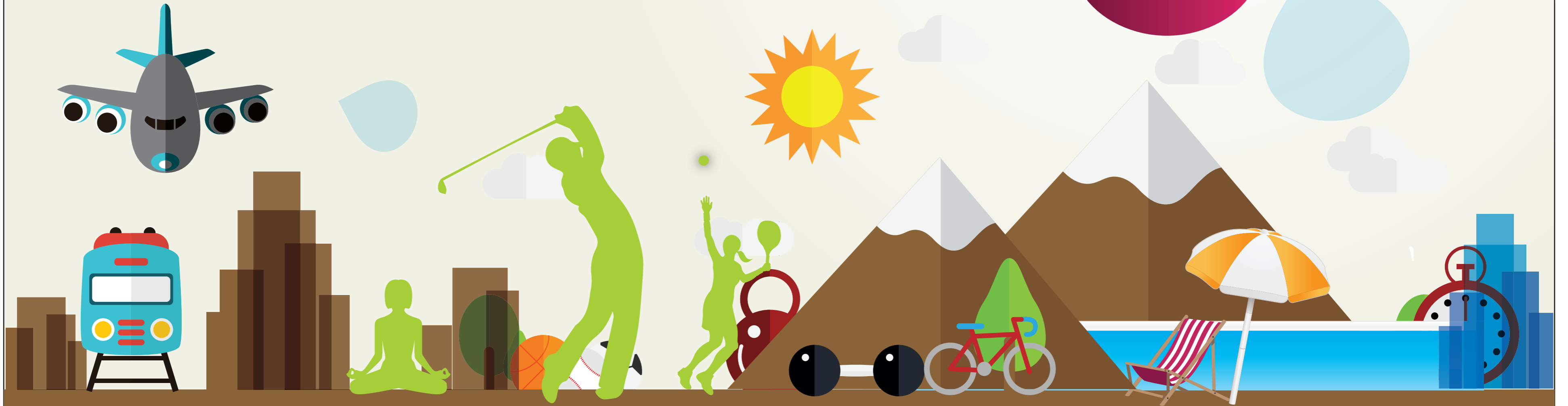
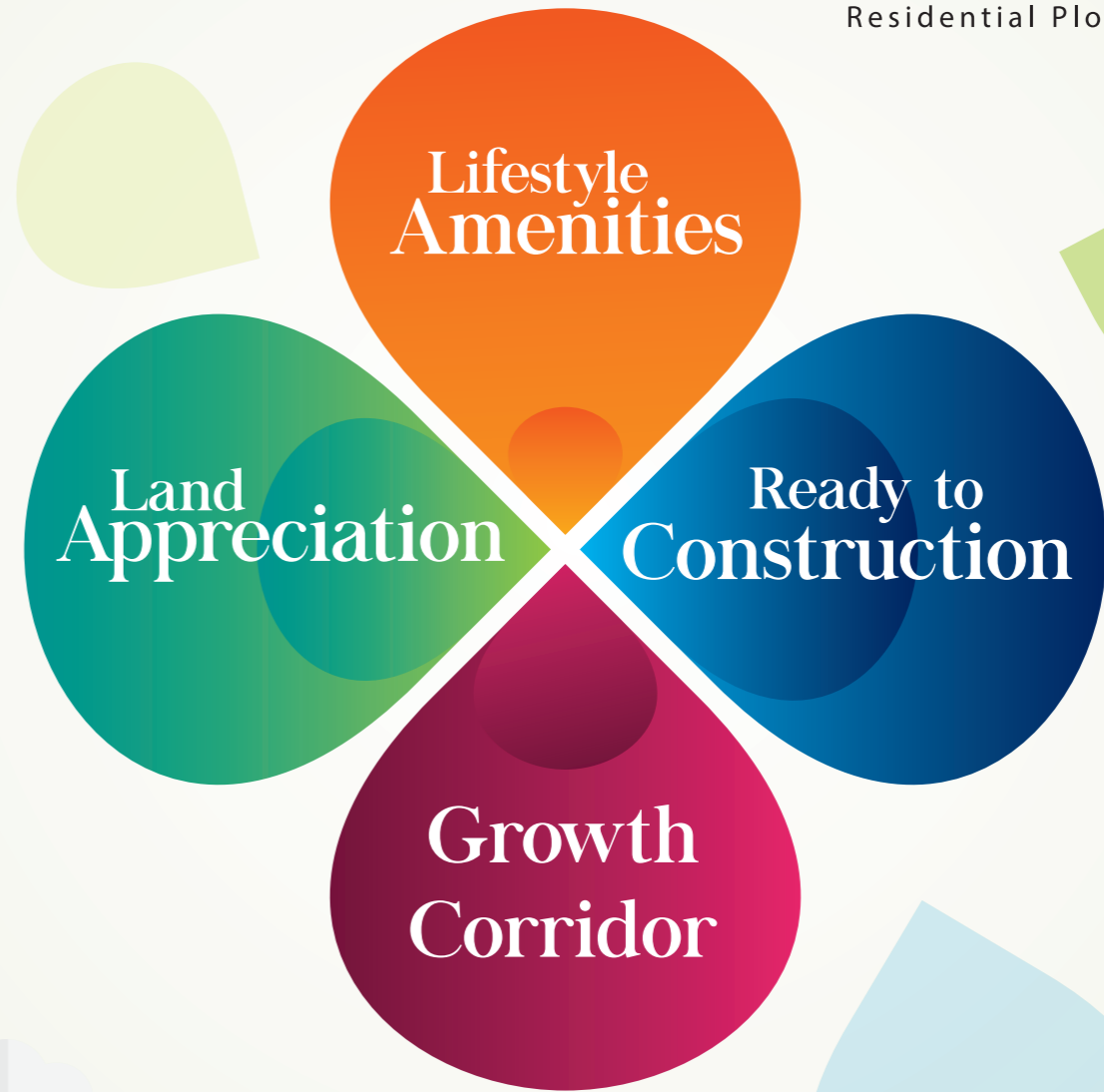
It's Your
World

The way you want it

It's time to think beyond the ordinary for an investment option that rewards you with exceptional returns. It's time to look beyond the cozy confines of a home in order to make every day of yours an exciting affair. It's time to see beyond possessing a piece of land for owning ultimate peace of mind. It's time to think beyond mere property. And it's time to think Ambience!

Because Ambience from Space Vision Group has everything you ever desired. Luxury, security, healthy environs, excitement, comfort, convenience, happiness or all of them at one go, while you have a dream home that promotes a healthy lifestyle & a wealthy future for your whole family.

So, come to choose Ambience. Come to choose the true essence of life.



It's Your World of Great Promise

From Heritage to Hitech, the transformation of Hyderabad has been historic and made the city emerge as one of the most sought after investment destination of the world. The city's inherent scope for radial growth coupled with unhindered development has not only expanded its limits but also provided the impetus for adjoining towns to flourish.

Of all these, Shadnagar of late has captured the imagination of smart investors. Thanks to the International Airport, Air Cargo, P & G, Amazon Educational institutions, etc. dotting its neighborhood which make real estate investment a profitable deal of all times.

And Ambience from Sapce Vision Group perfectly placed within close vicinity of all developments assures a bounty of returns in the future.



It's Your World of Unlimited Prosperity

Ambience scores a Perfect 10 when you compare its offerings with the standard investment checklist for a real estate project. Be it the location, accessibility, quality, planning, amenities, infrastructure, appreciation rate or anything that matters to a shrewd investor, Ambience comes as a perfect choice of investment for all times.

What's more is that you get more for less. As Ambience that comes with the most affordable price tag among its contemporaries makes it an irresistible choice.

Above all, the Bank Loan facilities and installment convenience makes it easy to own your dream.

Low Investment. High Appreciation



Bank Loans



Easy Installments



DTCP Approved





for Happy
Family Times!

Space Vision Group
Ambience
Residential Plots at Shadnagar



At Ambience you don't have to get out of your comfort zone to have a great weekend with family after a long week at work. Stroll through the lanes adorned with avenue plantations with your loved ones or relax in the lap of nature in aesthetically designed parks, run free with your little ones in the neatly manicured lawns or just sit by to watch the beautiful sun downs, you get to own many such priceless moments only at Ambience.



AVENUE PLANTATION



PARKS

It's Your World **for Exciting Days!**

Life at Ambience is an ever exciting experience. While a swanky clubhouse not only provides an excuse for bonding over with family but it also doubles up with your friends and neighbors.

Not to mention a large & well-maintained Swimming Pool readily offering a bracing dip everyday becomes a reviving experience for you. What's more? You can stretch your imagination to hosting Poolside Parties and splash into an ocean of excitement.



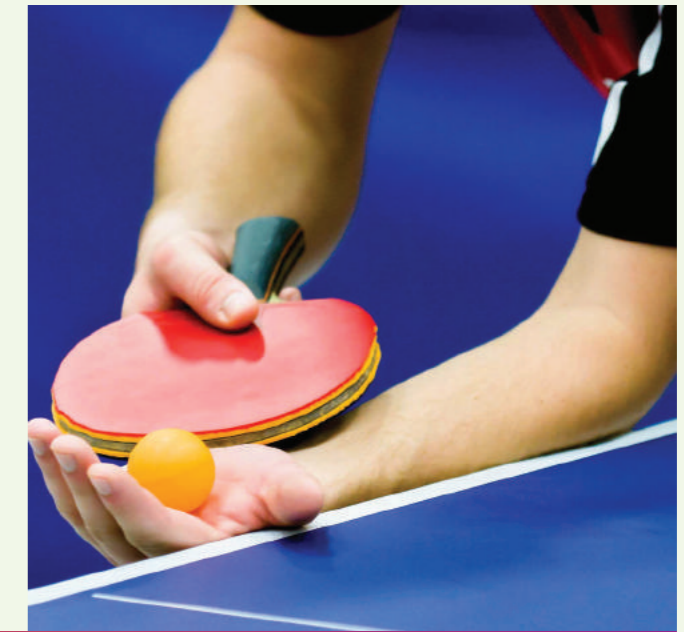
It's Your World **for Playful Ways!**

When was the last time you or your child for that matter, play an outdoor sport of choice to complete satisfaction untroubled by the thought of breaking your neighbor's window or without the hassle of moving vehicles or without travelling far for a sporting arena? We guess the chances are Zero.

But when you choose Ambience, life takes a playful turn. With dedicated spaces for sports like Shuttle, Table Tennis, Golf and Children's play areas among many others you get to relish the sportive side of life.



Golf Course



Indoor Games



It's Your
World

for Being Fit & Fine

Ambience truly appreciates the importance of exercise in keeping one fit and healthy whatever be the age. The reason why, it has conceived exclusive Jogging Track & state-of-the-art Gym that'll stir the health conscious person in you.

For those who have a thing for light workouts can explore a refreshing jog or a walk and for those who seek to tone up their body the fully equipped Gym happens to be place to let loose the fitness buff. Now, it's for you to choose your muse!



Jogging track



Gym



of Exceptional Quality State-of-the-art Infrastructure

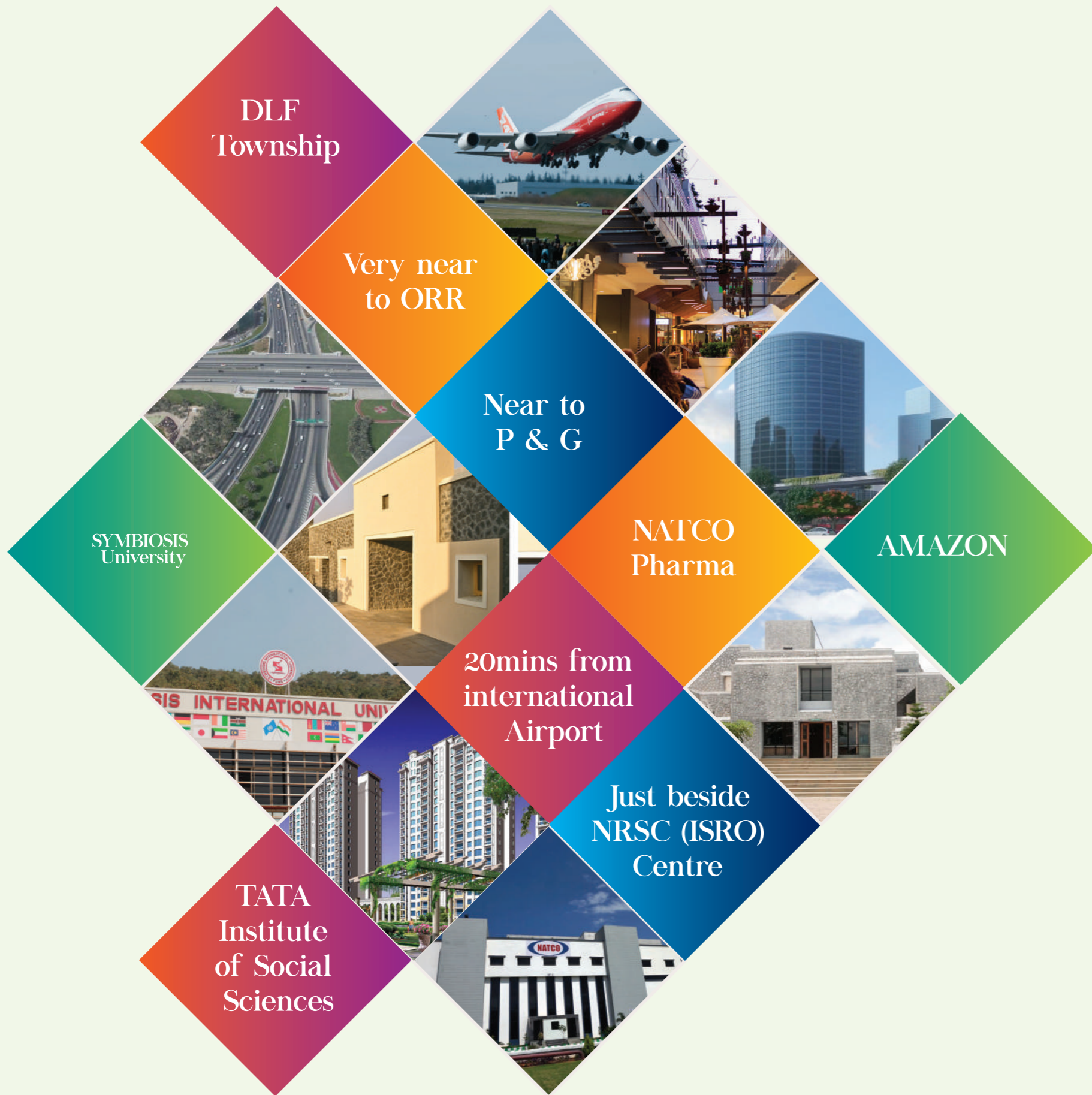


Ambience has best-in-class infrastructure in place. Ahead of its times in design and appeal, the plot layouting, roads, water & drain pipelines, electricity & water harvesting systems etc. are envisaged to accommodate the present as well as the future requirements. It's not all. Space Vision Group is one of those organizations that emphasizes on uncompromising standards of quality. So that, the customers are rewarded with value for every Rupee invested.

The most modern infrastructure at Ambience comprises of:

- 60', 40' & 33' feet wide roads
- 24 hours secured luxury gated community
- Club House
- Swimming Pool
- Electricity
- Green Walkways





Smart Location Shadnagar

Key Landmarks and Infrastructure:

- Transportation:** Gollapally Rly Station, Shadnagar Railway Station, PVR Elevated Expressway, NH9, NH43.
- Education:** SUKUM'S University, Noor Engg. College, TATA Institute of Social Sciences, Symbiosis International University, N.R.S.C. (ISRO) Centre.
- Industry & Commerce:** Amazon, Papyrus Port Resort, Prop IT Cluster, RAJEJA IT PARK, NOVOTEL HOTEL, INTERNATIONAL AIRPORT, Shadnagar Commercial, Shadnagar Residential, GVK, Greenacres, ISO, NATCO, DLFA, P&G, Johnson & Johnson, Balanagar Industrial Area, Borgula ISO Institute, Textile Park SAABS.
- Other:** Zoo Park, Assembly, N.G Ranga Agri University, Shamsabad, Towards Hitech City, Towards Chevelle / Kandi (NH9), Towards Uppal, Towards Mendipatnam.

Space Vision Group
Ambience
 Residential Plots at Shadnagar

**షాద్ నగర్ లో కొలువుదీరనున్న కార్పొరేట్ హాస్పిటల్స్,
 అమ్యూజ్ మెంట్ పార్క్, జూపార్క్**

**షాద్ నగర్, ఘట్ కేసర్, మేడ్చల్,
 శంకర్ పల్లిలో రైల్వే హబ్**

మిని ఇండియా షాద్ నగర్

**షాద్ నగర్ లో పారిశ్రామికవాడగా
 గుర్తింపు పొందిన కొత్తూరు**

**సాంతింటికి విజన్
 షాద్ నగర్ లో స్పేస్ విజన్ రెండు ప్రాజెక్టులు**

**కొత్తగా వచ్చిన జి.వో. తో హైదరాబాద్ లో
 చాలా ఇండస్ట్రిలు షాద్ నగర్ కు షిఫ్ట్**

షాందార్ షాద్ నగర్

IN THE NEWS



M.A.K PROJECTS PR
 Park c/o Plaza,Road No.1, Ba
 For Booking: 99858



It's Your
World

that Inspires Trust

Established in the year 2008, Space Vision Group emerged as one of the top realty organizations of Hyderabad. Basing its foundations on the values of trust and transparency the Group has inspired some of the highly successful projects of all times.

The Group derives its strength from its vastly experienced professionals who ensure that every project is handpicked for location, convenience, accessibility, scalability and last but not the least the potential to reward customers with unmatched returns.

And backed by an uncompromising slant for customer benefit, the group consistently strives for excellence to provide its customers with the best in terms of quality, profitability as well as over all prosperity.

